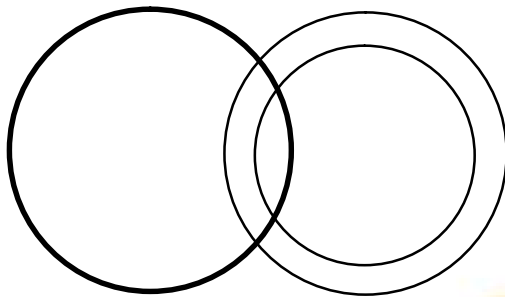


SAMPLE PAPER- 2

REASONING

1. Which of the following elements satisfy the Venn diagram?



- a. Flower, decoration, and cars
- b. Sons, doctors, and males
- c. Furniture, table, and chair
- d. Playground, student, females

2. Arrange the given words in the sequence in which they occur in the dictionary and select the correct options.

p- Luxurious

q- Lumpish

r- Luxuriance

s- Lustrous

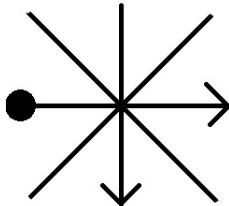
t- Lustiness

- a. q, t, s, p, r
- b. t, s, q, p, r
- c. p, r, t, q, s
- d. q, t, s, r, p

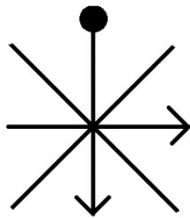


3. Select the odd one out

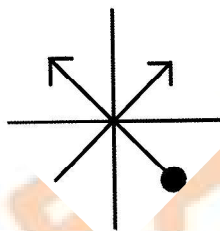
a.



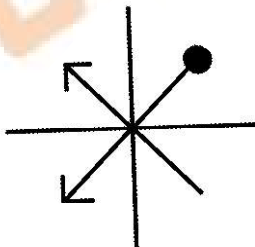
b.



c.



d.



4. Eight girls, P, Q, R, S, T, U, V, and W are sitting in a circle, facing each other. T is third to the left of V, who is on the immediate right of Q, who is third to the left of P. W is second to the right of U who is not an immediate neighbour of T. S is not an immediate neighbour of Q. Which of the following pairs have the first person on the immediate left of the second person?
- a. VQ
 - b. PU
 - c. RT
 - d. WS
5. One of the words given in the options cannot be formed by using the letters given below. Find out that word
- CONCENTRATE
- a. TREAT
 - b. CONCERN
 - c. TRAIN
 - d. CENTRE

SCIENCE

6. SARS is contagious, sometimes fatal illness caused by a virus. It initially appeared around 2002. What is the full form of SARS?
- a. Severe Acute Respiratory Syndrome
 - b. Superacute Respiratory Syndrome
 - c. Severely Absolute Respiratory Syndrome
 - d. Severely Amicable Respiratory Syndrome
7. An organelle X in a cell plays a major role in the production, processing and transport of proteins and lipids. It transports other materials as well. Identify X
- a. Golgi apparatus
 - b. Endoplasmic reticulum



- c. Gall bladder
- d. Ribosomes

8. Read the following statements about gametes and somatic cells carefully

- i. Gametes and somatic cells have different number of chromosomes.
- ii. Gametes and somatic cells are present almost in equal numbers in the body.
- iii. Evolution occurs due to the mutation in gametes
- iv. Meiosis is seen in somatic cells whereas Mitosis in gametes.

Which of the above statements are correct

- a. i and iv
- b. ii and iii
- c. ii and iv
- d. i and iii

9. Microorganisms can also be helpful to us. Complete the below paragraph by filling the correct options of the microorganisms used-

Idli and dosa are fermented by i. Milk uses ii to form curd. iii can be cooked.

- a. i- yeast, ii- algae, iii- fungus
- b. i- bacteria, ii- fungus, iii- yeast
- c. i- algae, ii- fungus, iii- yeast
- d. i- yeast, ii- bacteria, iii- fungus

10. Fill in the blanks to complete the information

Red rot sugarcane disease is caused by a (i) and its mode of transmission is through (ii).

- a. (i)- protozoa, (ii)- air
- b. (i) bacteria, (ii)- touch
- c. (i) fungi, (ii)- air and seeds
- d. (i) fungi, (ii)- water



11. Yeast is used in the production of

- a. Sugar
- b. Hydrochloric acid
- c. Oxygen
- d. Alcohol

12. Salting is a very good method of preserving pickles, fish, meat, etc. what role does the salt play in preservation?

- a. Salt reduces the moisture content
- b. Salt reacts with the food and forms a protective coat on the other food
- c. It cuts off the oxygen supply
- d. The sodium chloride breaks down into sodium and chloride.

13. The cells can be prokaryotic or eukaryotic depending on the nucleus.

Read the names of the given organisms carefully and identify which of them have prokaryotic nucleus by choosing the correct option

i. Protozoa. ii. Bluegreen algae. iii. Fungi. iv. Bacteria

- a. i and ii
- b. ii and iii
- c. i and iii
- d. ii and iv

in question numbers **14 and 15** two statements, Assertion (A) and Reason (R) are given. Answer these questions by selecting the appropriate option given below-

- A. Both 'A' and 'R' are correct, and R is the correct reason for A.
- B. Both 'A' and 'R' are correct, but R is not the correct reason for A.
- C. A is correct but R is wrong.
- D. A is wrong but R is correct.



14. **Assertion-** Eukaryotic cells have membrane bound organelles

Reason- Prokaryotic cells lack membrane bound organelle

- a. A
- b. B
- c. C
- d. D

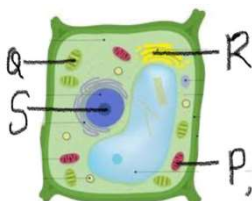
15. **Assertion-** Yeast is used in baking industry

Reason- Carbon dioxide produced during fermentation causes the bread dough to rise by thermal expansion.

- a. A
- b. B
- c. C
- d. D

ACHIEVERS SECTION

16.



Identify the functions of the cell organelles marked as, P, Q, R, and S in a plant cell by choosing the correct option.

- Helps in photosynthesis
 - Carries genes for the future generations
 - Production of ATP
 - Secretes enzymes
- a. P-production of ATP, Q-secretates enzymes, R-helps in photosynthesis, S-carries genes for the future generation
 - b. P- carries genes for the future generation, Q- secretates enzymes, R- helps in photosynthesis ,S-production of ATP



- c. P- carries genes for the future generation, Q- helps in photosynthesis, R- secretes enzymes, S- production of ATP
- d. P- production of ATP, Q- helps in photosynthesis, R- secretes enzymes, S- carries genes for the future generation

Answer **Q17 and Q18** based on the passage given below-

Microorganisms are classified into four major groups- Bacteria, Fungi, Protozoa, and Algae. Viruses are microscopic but are different from microorganisms.

17. Viruses are different from other microorganisms. Identify the statement which is correct for viruses and choose the appropriate option.

- (i) Viruses are only screw shaped
 - (ii) Viruses are not fully living
 - (iii) Viruses do not have RNA and DNA
 - (iv) The outside of the virus is enveloped with lipids
- a. (i) and (ii)
 - b. (ii) and (iv)
 - c. (ii) and (iii)
 - d. (iii) and (iv)

18. More number of bacteria are attacked by viruses than human beings.

What are bacteria attacking viruses called?

- a. Virophage
- b. Lysophage
- c. Bacteriophage
- d. Bacteriosome

19. Many cell organelles have their own DNA. One such example is the mitochondrion. Another example of this can be-



- a. Plastids
- b. Chloroplast
- c. Golgi apparatus
- d. Endoplasmic reticulum

20. A cell organelle X is used in production, processing, and transport of proteins and lipids. It is transport network of molecules going to specific places. Identify X

- a. Plastids
- b. Chloroplast
- c. Golgi apparatus
- d. Endoplasmic reticulum

Answer Key

1.(b)	2.(d)	3.(b)	4.(d)	5.(c)	6.(a)	7.(b)	8.(d)	9.(d)	10.(c)	11.(d)	12.(a)	13.(d)	14.(b)	15.(a)
16(d)	17(b)		19(a)	20(d)										

